

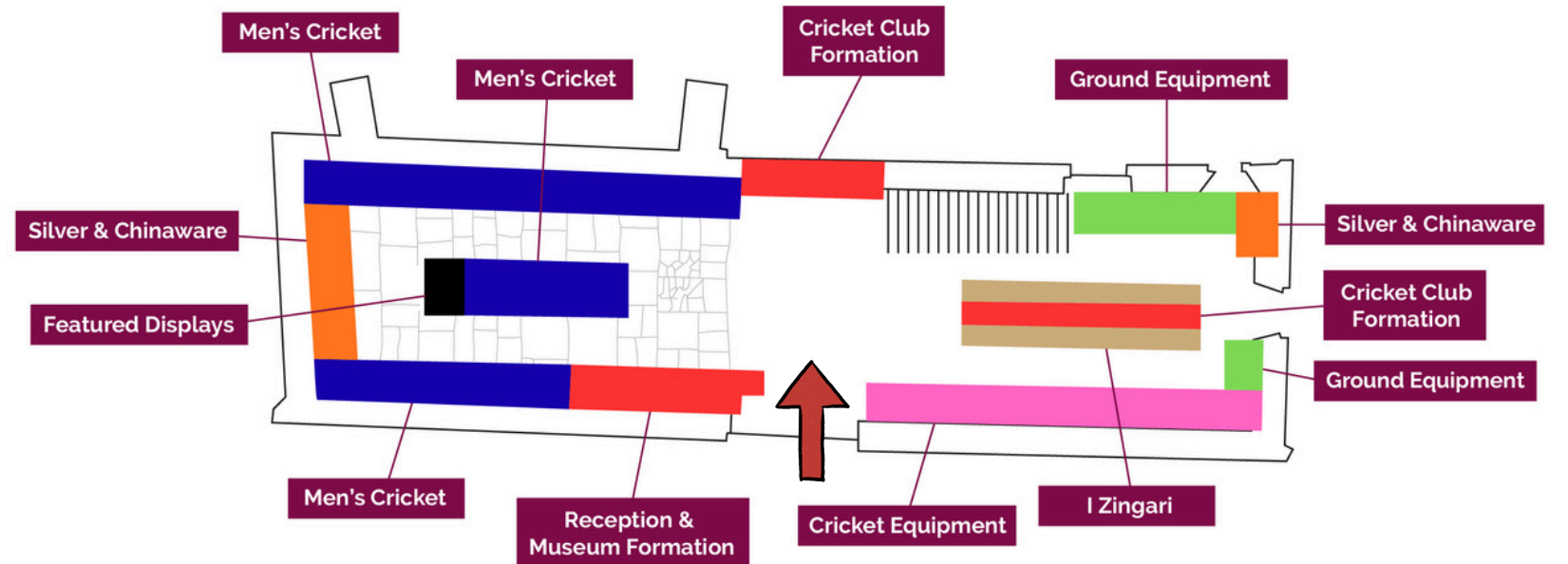
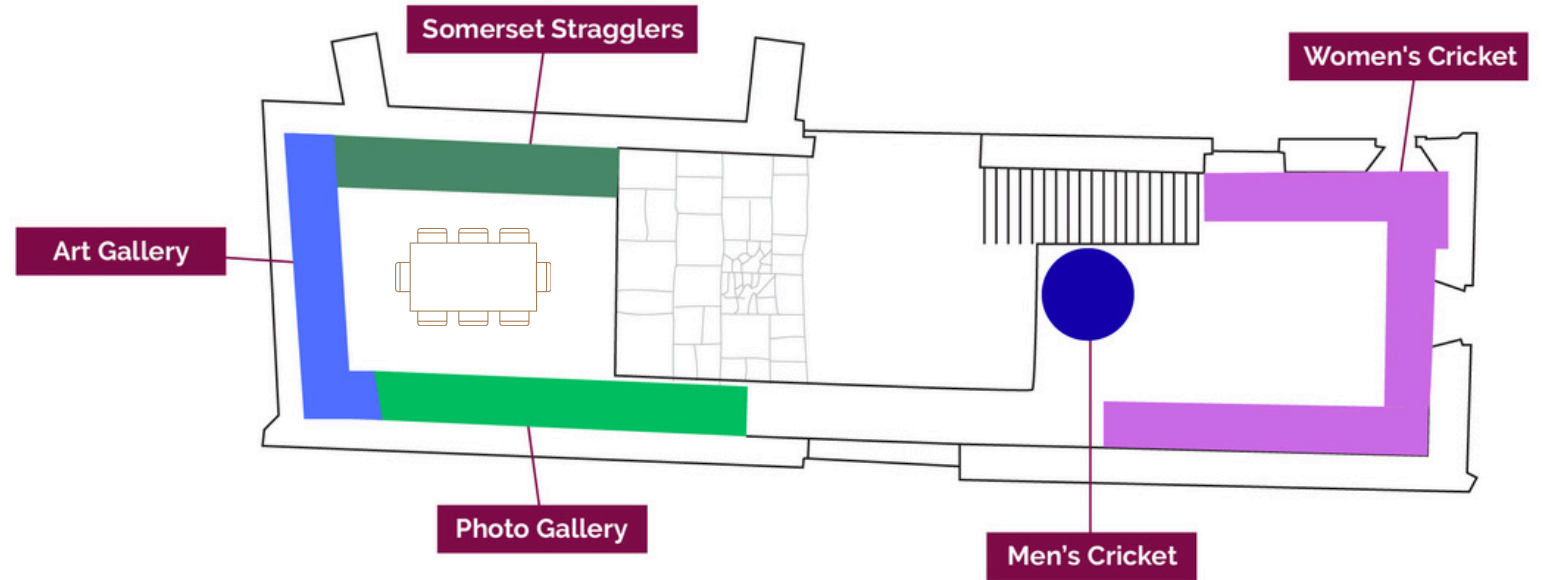
Somerset Cricket Museum



Museum Layout

Museum

Quiz



Entrance, Club & Museum History

The Museum is the envy of County Clubs around the country and the history of the building makes it a very special place.



I Zingari

Founded in 1845, I Zingari is one of the world's oldest cricket clubs. It is nomadic, not having its home ground.



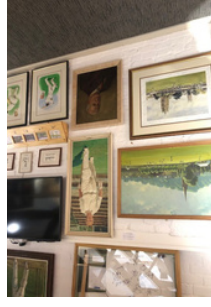
Women's Cricket

Our Women's Cricket displays include Somerset Women, Western Storm and England memorabilia.



Art Gallery

The Art Gallery includes Oils, Water Colours, Line Drawings and even an Ipen picture. Look out for other art related objects too.



Men's Cricket

A celebration of the teams and players that are at the very heart of the Club is presented in these displays.



Cricket Equipment

As well as autographed bats, the evolution of caps, gauntlets, and gloves are explored.



Men's Cricket Clothing

Throughout the Museum are examples of Blazers, Caps, Ties and Shirts.



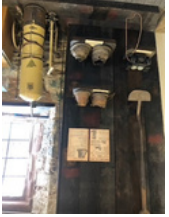
Somerset Stragglers

Somerset Stragglers, founded in 1901, are still playing friendly matches today.



Ground Equipment

Quirky horses hooves covers to a field telephone feature in the Ground Equipment display.



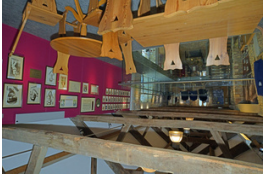
Silver and Chinaware

Beyond the trophies, the silver and china collections offers a whole variety of cricket-themed items.



Photo Gallery

What a heritage we have - as seen in the Captains Gallery alongside other famous players.



Featured Displays

Around the Museum you will see displays covering Contracts, Hat-tricks, One Day matches and Victorian Art.

